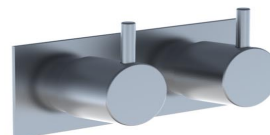


Vola 702 Wall Taps

Originally designed by Arne Jacobsen in the 1960's this iconic tapware range has stayed contemporary ever since and is renowned the world over. Made in Denmark, it has been specified in many of the world's most amazing commercial and residential fit-outs.

Features: Two-handle build-in mixer w/ ceramic disc technology. Includes two-hole plate 60 x 153mm (002).



Finish: Available in all Vola finishes.

Options: Available with a 25mm, 55mm (M) or 100mm (L) levers.

For more info on this product, please visit the [Vola website](#).

Specifications

